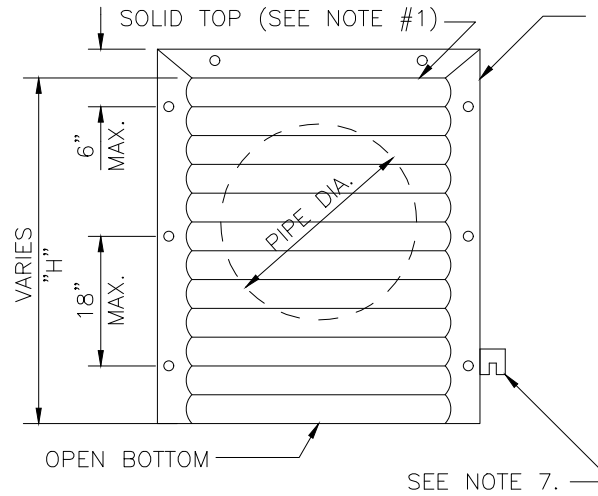
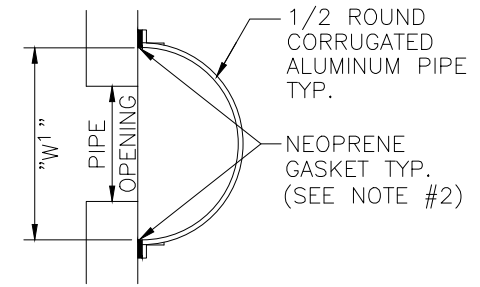


SIDE VIEW



FRONT VIEW



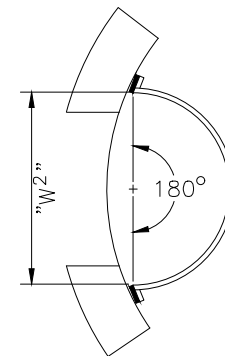
TOP VIEW
RECTANGULAR STRUCTURE

PIPE DIA.	W ¹ (IN)	W ² (IN)	T (GAUGE)	H (IN)
15"	21"	21"	16	VARIES
18"	24"	24"	16	VARIES
21"	30"	30"	16	VARIES
24"	30"	36"	16	VARIES
30"	36"	42"	14	VARIES
36"	42"	48"	14	VARIES
42"	48"	54"	14	VARIES
48"	54"	60"	14	VARIES
54"	60"	66"	14	VARIES

1. RECTANGULAR STRUCTURE
2. ROUND STRUCTURE

NOTES:

- ALUMINUM SHEET OF SAME THICKNESS (GAUGE) AS PIPE SHALL BE WELDED TO CLOSE OPENING AT THE TOP.
- NEOPRENE ADHESIVE BACKED GASKET, OR APPROVED EQUAL (1" x 3") SHALL BE INSTALLED ON THE SIDES AND TOP OF ALL BAFFLES.
- POLLUTION RETARDANT BAFFLE TO BE FASTENED IN PLACE WITH 3/8"x4" STAINLESS STEEL "RED HEADS", OR APPROVED EQUAL.
- ALL EXFILTRATION TRENCHES SHALL HAVE A POLLUTION RETARDANT BAFFLE AT EACH CONNECTION POINT TO A STRUCTURE (SEE EXFILTRATION TRENCH DETAIL). THE BOTTOM OF THE BAFFLE SHALL BE A MIN. OF 12" BELOW C.W.E.
- FIBERGLASS BAFFLES ARE NOT PERMITTED.
- MOUNTING BRACKETS MAY BE ADDED TO FLAT BARS TO EASE INSTALLATION IN ROUND STRUCTURES. SPACING TO MATCH HOLES IN FLAT BARS.
- FOR POLLUTION RETARDANT BASINS THE BOTTOM ELEVATION OF THE BAFFLE MUST BE A MINIMUM OF 2' BELOW THE CONTROL WATER ELEVATION.



TOP VIEW
ROUND STRUCTURE

